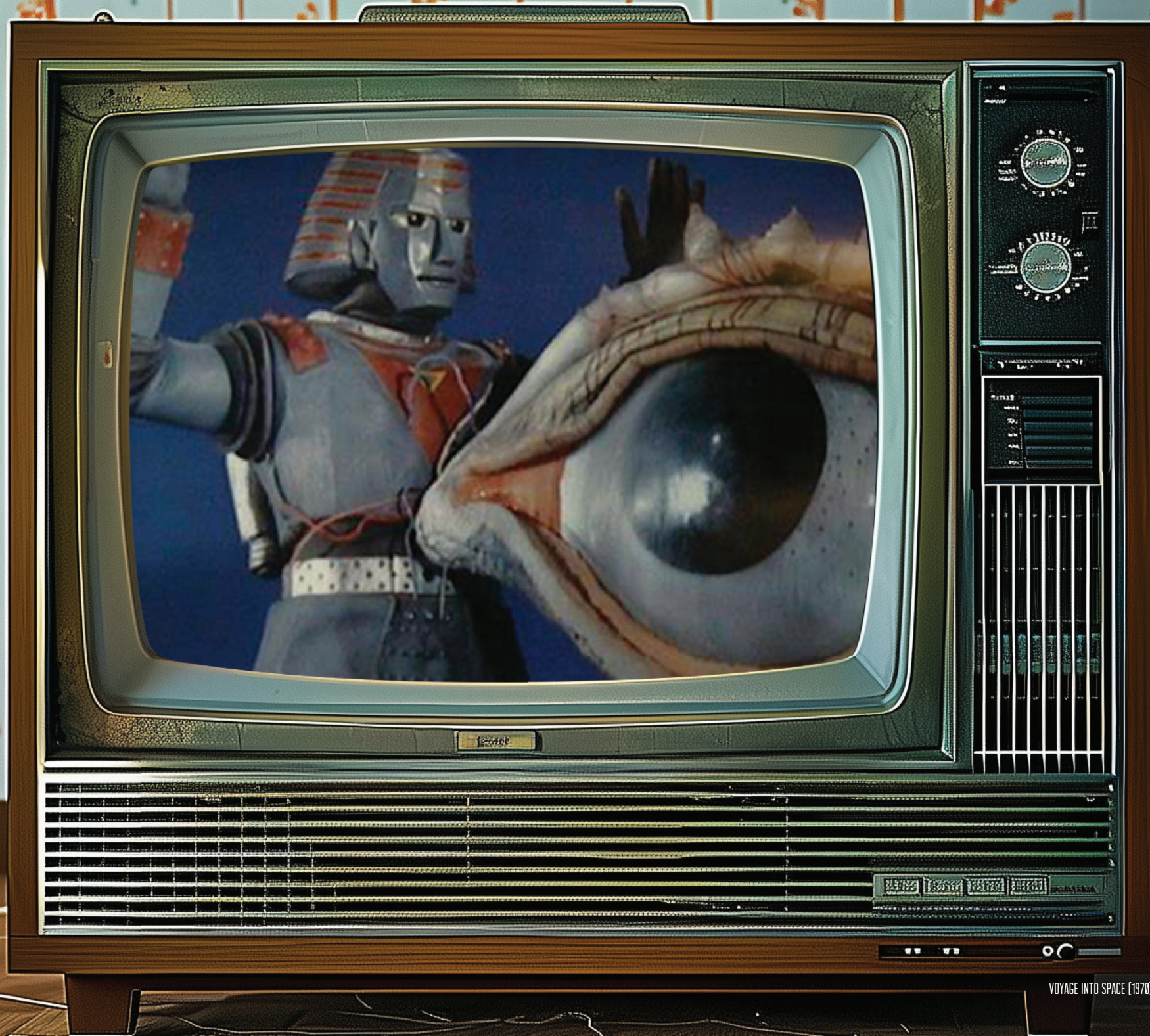




CREATURE
DOUBLE
FEATURE

2 0 2 5 C A L E N D A R



VOYAGE INTO SPACE (1970)

JANUARY

SUN

MON

TUE

WED

THU

FRI

CREATURE DOUBLE FEATURE
SATURDAY

1

New Year's Day
Haruo Nakajima's Birthday
Kumi Mizuno's Birthday

2

Hideyo Amamoto's Birthday

3

Ray Milland's Birthday

4

1:00PM
2:30PM

5

Miwa Takada's Birthday

6

7

8

9

Lee Van Cleef's Birthday

10

11

1:00PM
2:30PM

12

13

Paul Birch's Birthday

14

15

Martin Luther King Jr. Day
Phyllis Coates' Birthday

16

Carolyn Munro's Birthday

17

18

1:00PM
2:30PM

19

Edgar Allen Poe's Birthday

20

Colin Clive's Birthday

21

22

Sonny Chiba's Birthday

23

24

Julie Bennet's Birthday

25

1:00PM
2:30PM

26

Scott Glenn's Birthday

27

28

29

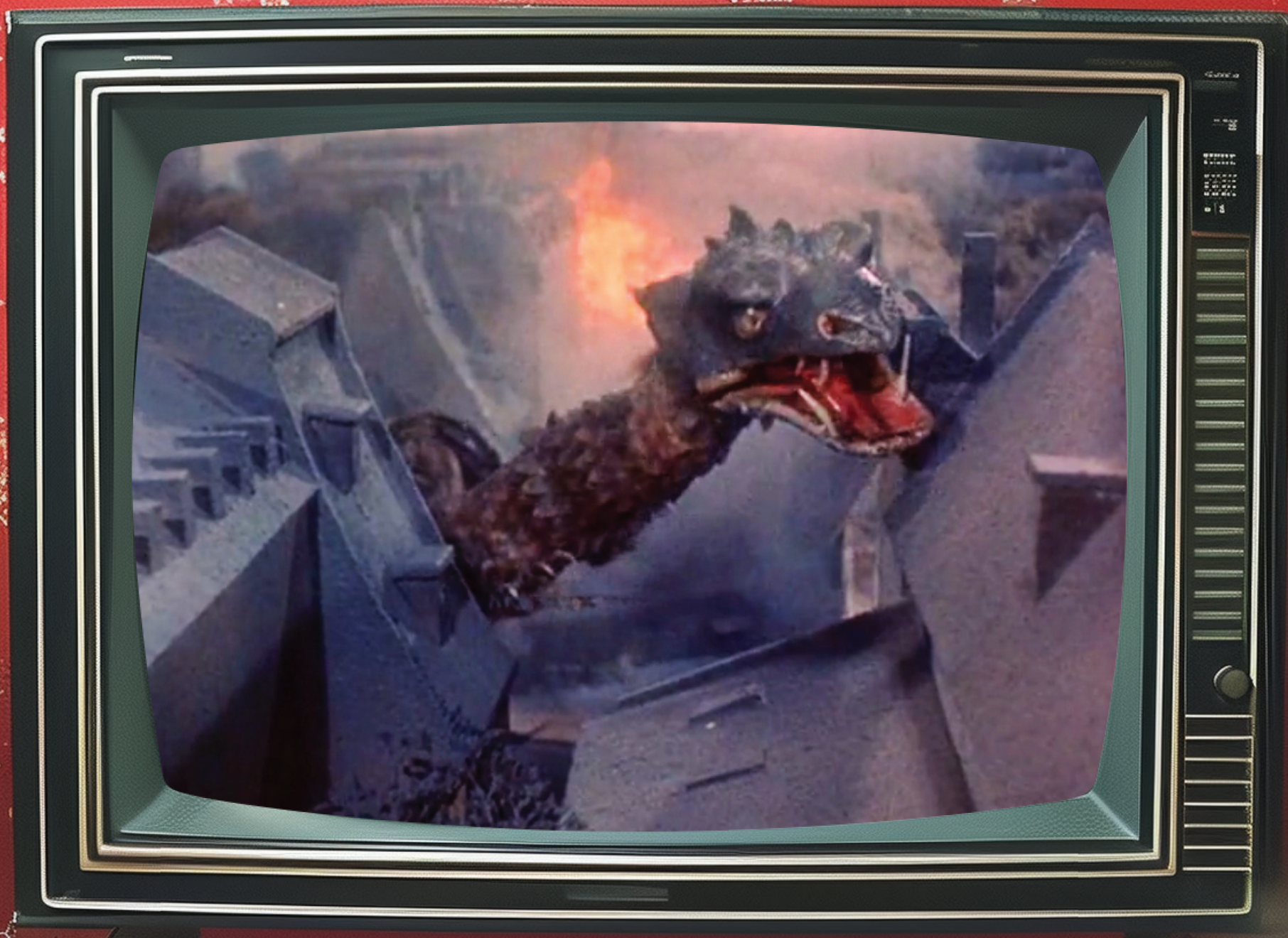
30

Kotaro Tomita's Birthday

31

John Agar's Birthday
James Franciscus' Birthday

1



REPTILICUS (1961)

FEBRUARY

SUN	MON	TUE	WED	THU	FRI	CREATURE DOUBLE FEATURE SATURDAY
26	27	28	29	30	31	1 Helen Chandler's Birthday 1:00PM 2:30PM
2 Groundhog Day	3	4 Gary Conway's Birthday	5 John Carradine's Birthday	6	7	8 1:00PM 2:30PM
9	10 Lon Chaney Jr.'s Birthday Hazel Court's Birthday	11	12 Lincoln's Birthday	13 Furanki Sakai's Birthday Barbara Shelley's Birthday	14 Valentine's Day	15 John Barrymore's Birthday Gale Sondergaard's Birthday 1:00PM 2:30PM
16 Ricou Browning's Birthday	17 Presidents' Day Jun Fukuda's Birthday	18	19	20	21	22 Dwight Frye's Birthday 1:00PM 2:30PM
23	24	25	26	27	28	1



GARGOYLES (1972)

MARCH

SUN	MON	TUE	WED	THU	FRI
23	24	25	26	27	28
2 Yu Fujiki's Birthday	3 Cathy Down's Birthday	4	5 Dawn Richard's Birthday	6	7 Momoko Kochi's Birthday
9 Daylight Saving Time Begins	10	11 Shemp Howard's Birthday	12 Takashi Shimura's Birthday	13	14
16	17 St. Patrick's Day	18 Peter Grave's Birthday	19	20	21
23 Joan Crawford's Birthday	24	25	26 Leonard Nimoy's Birthday	27	28
30	31				

CREATURE DOUBLE FEATURE SATURDAY

1	Lionel Atwill's Birthday Ichiro Arishima's Birthday
1.00PM	
2.30PM	
8	
1.00PM	
2.30PM	
15	
1.00PM	
2.30PM	
22	
1.00PM	
2.30PM	
29	



DIE MONSTER DIE! (1965)

APRIL

SUN	MON	TUE	WED	THU	FRI	CREATURE DOUBLE FEATURE SATURDAY
30	31	1 April Fools Day Lon Chaney Sr's Birthday Yumi and Emi Itô's Birthday	2	3	4	5 Roger Corman's Birthday Frank Gorshin's Birthday 1:00PM 2:30PM
6	7 Francis Ford Coppola's Birthday Stan Winston's Birthday	8 National Unicorn Day	9	10	11	12 1:00PM 2:30PM
13 Peter Dyneley's Birthday	14	15	16 Les Tremayne's Birthday	17	18	19 Rhodes Reason's Birthday 1:00PM 2:30PM
20 Elena Verdugo's Birthday	21 Patriots' Day	22 Earth Day Jack Nicholson's Birthday	23	24	25	26 Tomoyuki Tanaka's Birthday 1:00PM 2:30PM
27 Casey Kasem's Birthday	28 Carolyn Jones' Birthday	29 Akira Takarada's Birthday Richard Carlson's Birthday	30	1	2	3



GODZILLA VS. MECHAGODZILLA (1974)

MAY

SUN	MON	TUE	WED	THU	FRI	CREATURE DOUBLE FEATURE SATURDAY
27	28	29	30	1	2 National Space Day	3 1:00PM 2:30PM
4	5 Cinco de Mayo Jack Pierce's Birthday	6	7 Ishiro Honda's Birthday	8 Don Rickles' Birthday Salome Jens' Birthday	9	10 1:00PM 2:30PM
11 Mother's Day Doug McClure's Birthday	12 Wilfred Hyde-White's Birthday	13 Sonoe Nakajima's Birthday	14 Kenji Sahara's Birthday	15	16	17 Armed Forces Day Dennis Hopper's Birthday 1:00PM 2:30PM
18 Yoshio Tsuchiya's Birthday	19	20 Tom Evans's Birthday	21 Raymond Burr's Birthday	22	23 World Turtle Day	24 1:00PM 2:30PM
25	26 Memorial Day Peter Cushing's Birthday	27 Vincent Price's Birthday Christopher Lee's Birthday Kenpachirō Satsuma's Birthday	28	29	30	31 Akira Ifukube's Birthday 1:00PM 2:30PM



ATTACK OF THE MUSHROOM PEOPLE (1963)

JUNE

SUN	MON	TUE	WED	THU	FRI	CREATURE DOUBLE FEATURE SATURDAY
1	2 Florence Marley's Birthday Max Showalter's Birthday Shinichi Sekizawa's Birthday	3	4 Bruce Dern's Birthday	5	6	7 1.00PM 2.30PM
8 Bernie Casey's Birthday	9	10	11	12	13 Basil Rathbone's Birthday	14 Flag Day 1.00PM 2.30PM
15 Father's Day	16 Ilona Massey's Birthday	17 Ralph Bellamy's Birthday	18 Dick Foran's Birthday	19 Juneteenth	20	21 First Day of Summer 1.00PM 2.30PM
22	23	24	25 June Lockhart's Birthday	26 Peter Lorre's Birthday	27	28 1.00PM 2.30PM
29 Ray Harryhausen's Birthday Carl Craig's Birthday	30	1	2	3	4	5



JULY

SUN	MON	TUE	WED	THU	FRI	CREATURE DOUBLE FEATURE SATURDAY
29	30	1 David Prowse's Birthday	2 World UFO Day	3	4 Independence Day	5 Ward Costello's Birthday 1:00PM 2:30PM
6 Nancy Reagan's Birthday June Kenny's Birthday	7 Tsuburaya Eiji's Birthday	8 Glenn Langan's Birthday	9	10 Nick Adams's Birthday	11 Tab Hunter's Birthday	12 1:00PM 2:30PM
13	14	15	16	17	18	19 Arthur Rankin Jr.'s Birthday 1:00PM 2:30PM
20	21 Paul Blaisdell's Birthday	22	23	24	25	26 James Best's Birthday Suzanna Leigh's Birthday 1:00PM 2:30PM
27 Tadao Takashima's Birthday	28	29	30	31	1	2



GAMERA VS. GIRON (1969)

AUGUST

SUN	MON	TUE	WED	THU	FRI	CREATURE DOUBLE FEATURE SATURDAY
27	28	29	30	31	1	2 1:00PM 2:30PM
3	4	5 John Saxon's Birthday	6 Hiroshima Memorial Day	7 Hisaya Ito's Birthday	8 Richard Anderson's Birthday International Cat Day	9 Nagasaki Memorial Day 1:00PM 2:30PM
10 Curt Stodmak's Birthday	11	12 Hiroshi Koizumi's Birthday	13	14 World Lizard Day	15 Pat Priest's Birthday	16 Kipp Hamilton's Birthday Glenn Strange's Birthday 1:00PM 2:30PM
17 Evelyn Ankers' Birthday	18	19 Jun Tazaki's Birthday	20	21	22	23 1:00PM 2:30PM
24	25	26 National Dog Day	27	28	29 International Day against Nuclear Tests	30
31 Katsumi Tesuka's Birthday						



SEPTEMBER

SUN

31

7

National Grandparents Day

14

21

28

Noriaki Yuasa's Birthday

MON

1

Labor Day
Yvonne De Carlo's Birthday

8

15

Fay Wray's Birthday

22

First Day of Autumn

29

Nora Hayden's Birthday
Virginia Bruce's Birthday

TUE

2

Dale Dorman's Birthday

9

16

Marvin Middlemark's Birthday
Jules Bass' Birthday

23

30

WED

3

10

17

24

Bert I. Gordon's Birthday

1

THU

4

11

Patriot Day

18

Frankie Avalon's Birthday
Veronica Carlson's Birthday

25

Mitsunobu Kaneko's Birthday

2

FRI

5

Gloria Holden's Birthday

12

Mizuho Yoshida's Birthday

19

26

3

CREATURE DOUBLE FEATURE
SATURDAY

6

1:00PM

2:30PM

13

Richard Kiel's Birthday
Bob Eggleton's Birthday

1:00PM

2:30PM

20

1:00PM

2:30PM

27

1:00PM

2:30PM

4



TERROR OF MECHAGODZILLA (1975)

OCTOBER

SUN	MON	TUE	WED	THU	FRI	CREATURE DOUBLE FEATURE SATURDAY
28	29	30	1	2 Bud Abbott's Birthday	3 Henry Hull's Birthday	4 Shirley Kilpatrick's Birthday 1:00PM 2:30PM
5 Larry Fine's Birthday John Hoyt's Birthday	6	7	8	9	10	11 1:00PM 2:30PM
12	13 Columbus Day	14 Jack Arnold's Birthday	15 Virginia Leith's Birthday	16	17 Julie Adams' Birthday Beverly Garland's Birthday	18 Dawn Wells' Birthday Klaus Kinski's Birthday 1:00PM 2:30PM
19	20 Bela Lugosi's Birthday	21	22 Curly Howard's Birthday	23	24 Ken Utsui's Birthday	25 Whit Bissell's Birthday Billy Barty's Birthday 1:00PM 2:30PM
26	27 Lara Parker's Birthday	28 Elsa Lanchester's Birthday	29 Tomoko Ai's Birthday	30 Jane Randolph's Birthday	31 Halloween Michael Landon's Birthday	1



CREATURE FROM THE BLACK LAGOON (1954)

NOVEMBER

SUN	MON	TUE	WED	THU	FRI	CREATURE DOUBLE FEATURE SATURDAY
26	27	28	29	30	31	1 1:00PM 2:30PM
2 Daylight Saving Time Ends	3	4	5	6	7	8 Bram Stoker's Birthday 1:00PM 2:30PM
9	10 Claude Raine's Birthday Russell Johnson's Birthday	11 Veterans Day	12	13 Jack Elam's Birthday	14	15 1:00PM 2:30PM
16 Hiroshi Sekita's Birthday	17	18	19	20 Mie Hama's Birthday	21	22 Robert Vaughn's Birthday 1:00PM 2:30PM
23 Boris Karloff's Birthday Michael Gough's Birthday	24 Peggy Neal's Birthday	25	26	27 Thanksgiving	28	29
30						



KONGA [1961]

DECEMBER

SUN	MON	TUE	WED	THU	FRI	CREATURE DOUBLE FEATURE SATURDAY
30	1 Akira Kubo's Birthday	2	3	4	5	6 Yuniko Hoshi's Birthday 1.00PM 2.30PM
7 Pearl Harbor Remembrance Day	8	9 Margaret Hamilton's Birthday	10 Anne Gwynne's Birthday	11	12	13 1.00PM 2.30PM
14 Laurence Naismith's Birthday	15	16 Akihiko Hirata's Birthday	17	18 Yumiko Katayama's Birthday	19	20 1.00PM 2.30PM
21 Ed Nelson's Birthday First Day of Winter	22	23	24 Christmas Eve Katsuhiko Sasaki's Birthday	25 Christmas Day	26 Linda Miller's Birthday	27 1.00PM 2.30PM
28	29 Freda Jackson's Birthday	30 Russ Tamblyn's Birthday	31 New Year's Eve	1	2	3

JANUARY 2026

SUN	MON	TUE	WED	THU	FRI	CREATURE DOUBLE FEATURE SATURDAY
				1	2	3 1:00PM 2:30PM
4	5	6	7	8	9	10 1:00PM 2:30PM
11	12	13	14	15	16	17 1:00PM 2:30PM
18	19	20	21	22	23	24 1:00PM 2:30PM
25	26	27	28	29	30	31 1:00PM 2:30PM

WORD SEARCH:
GODZILLA
MOTHRA
KINGGHIDORAH
RODAN
MECHAGODZILLA
BIOLLANTE
HEDORAH
GIGAN
ANGUIRUS
KUMONGA
BARAGON
TITANOSAURUS
EBIRAH
GOROSAURUS
MANDA
VARAN

M	E	C	H	A	G	O	D	Z	I	L	L	A	V	A	N
O	H	E	D	O	R	A	H	T	Y	Z	A	B	B	D	E
T	F	G	H	I	J	K	L	I	N	O	P	A	R	S	B
H	U	V	W	X	Y	Z	A	T	C	D	R	F	G	H	I
R	J	K	G	M	N	O	P	A	R	A	T	U	V	W	R
A	Y	Z	I	B	C	D	E	N	G	V	I	J	K	L	A
K	I	N	G	G	H	I	D	O	R	A	H	N	O	P	H
U	R	S	A	U	V	A	N	S	Z	R	B	C	A	E	F
M	G	H	N	J	K	L	L	A	O	A	Q	R	L	T	U
O	V	W	X	Y	Z	A	B	U	D	N	F	G	L	I	J
N	K	L	M	N	O	P	Q	R	T	U	V	W	I	X	Y
G	O	R	O	S	A	U	R	U	S	A	B	C	Z	D	E
A	F	G	H	I	J	K	L	S	N	O	Q	R	D	S	T
B	I	O	L	L	A	N	T	E	U	V	W	Y	O	Z	A
A	N	G	U	I	R	U	S	B	C	D	E	F	G	H	I
R	O	D	A	N	J	K	L	M	A	N	D	A	B	A	N

CREATURE
DOUBLE
FEATURE

2025 CALENDAR

CELEBRATING THE CLASSIC WLVI-TV56 TELEVISION SHOW

CREATURE
DOUBLE
FEATURE
ROUNDUP



FROM FANS OF CREATURE DOUBLE FEATURE • FOR FANS OF CREATURE DOUBLE FEATURE

All trademarks and registered trademarks are the property of their respective owners.